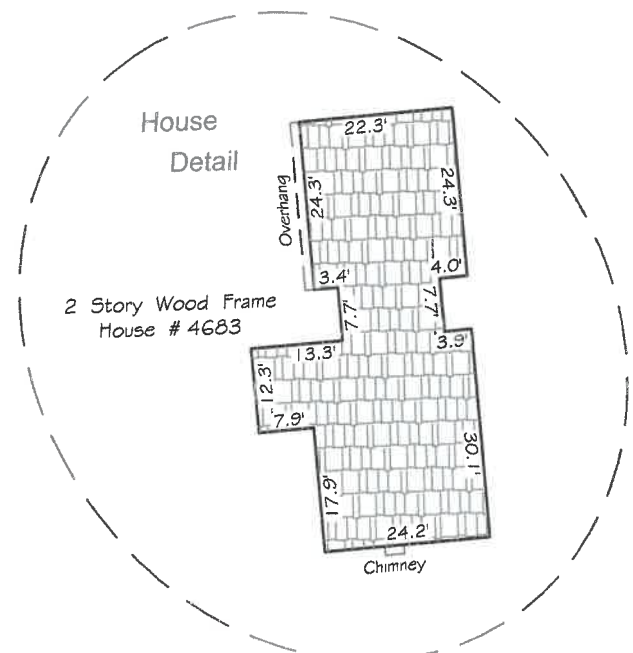
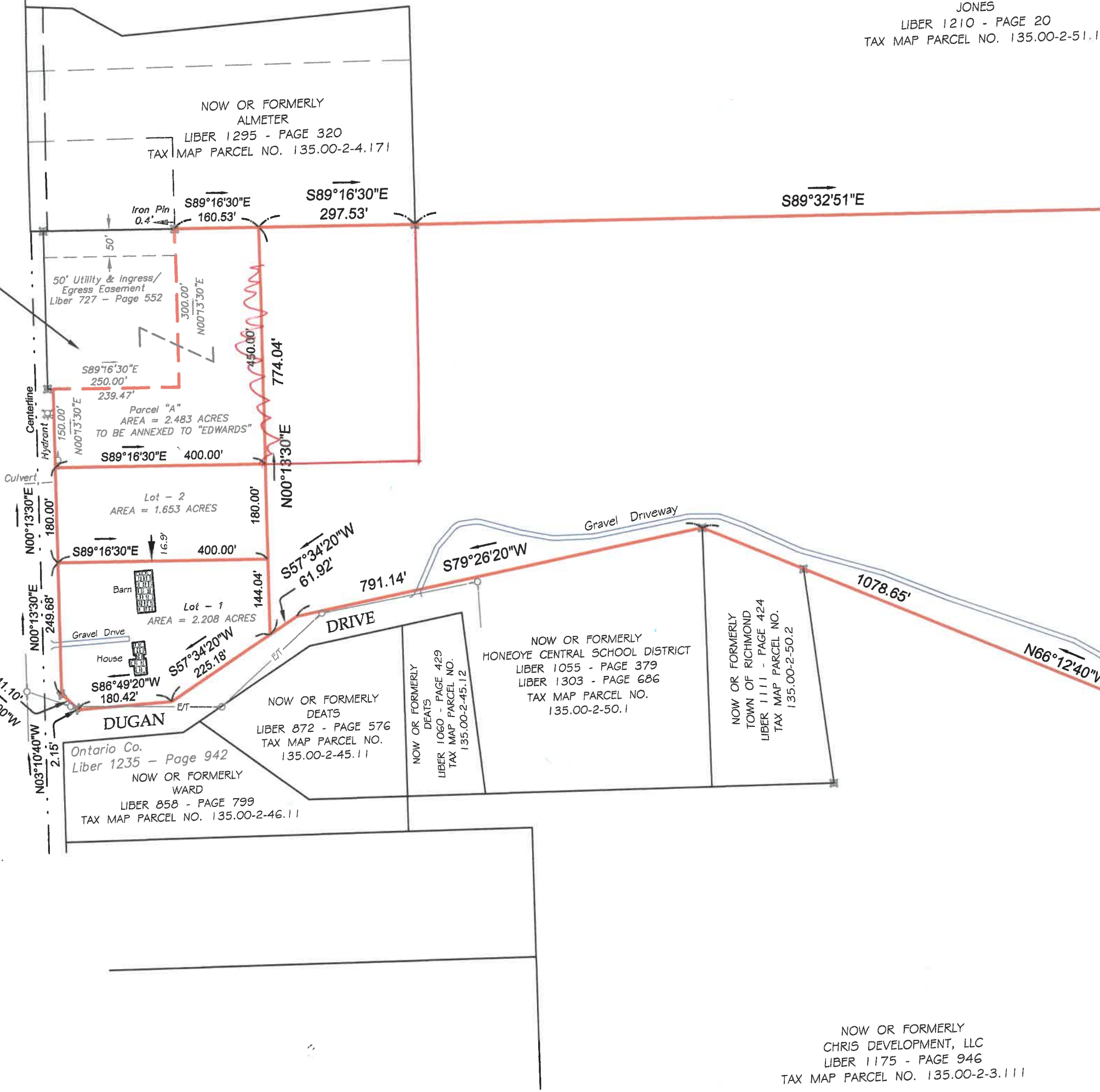






COUNTY ROAD 21



OF RICHMOND:

Board of the Town of \_\_\_\_\_, 20\_\_\_\_, subject to said resolution. Any portion of this Subdivision is hereby approved.

by: \_\_\_\_\_  
 Town Engineer

REVISIONS			
NO.	DATE	DESCRIPTION	BY

- ✕ IRON PIN OR PIPE FND
- ✕ IRON PIN SET
- ⊙ WOOD POST
- ▲ P.K. NAIL SET
- CONCRETE MONUMENT
- UTILITY POLE

01.43'

S89°41'06"E

1733.71'

# Lot - 3 AREA = 128.802 ACRES

Portion of  
Tax Map Parcel No. 135.00-2-6.1

NOTE: SEE OIL AND GAS LEASE TO  
FRANCHOT & COMPANY, INC. (LIBER 728 - PAGE 1018)  
ASSIGNMENT TO HONEOYE STORAGE CORP. (LIBER 744 - PAGE 213)

HONEOYE CREEK  
CREEK MEANDERS THROUGH BOTTOM LAND

S17°59'39"W  
388.23'  
S02°37'09"W  
213.21'

See Agreement  
Liber 892 - Page 1036

607.48'

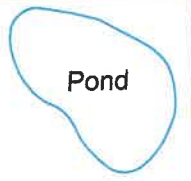
N89°04'17"W

802.94'

S89°52'59"W

671.07'

S89°52'59"W



Pond

NOW OR FORMERLY  
GENTRY / PECORA  
LIBER 1442 - PAGE 986  
TAX MAP PARCEL NO. 135.00-2-7.1

NOW OR FORMERLY  
STATE OF NEW YORK  
DEPARTMENT OF ENVIRONMENTAL CONSERVATION  
LIBER 892 - PAGE 1039  
LIBER 892 - PAGE 10  
TAX MAP PARCEL NO. 135.00-2-7.1

NOW OR FORMERLY  
SMITH  
LIBER 1386 - PAGE 641  
TAX MAP PARCEL NO. 135.15-1-7

NOW OR FORMERLY  
DEATS  
LIBER 1181 - PAGE 73  
TAX MAP PARCEL NO. 135.15-1-12.1

200



MAP OF SU